

He Mīharo Rua

nā Rihia Kenny



nā Ali Teo ngā pikitia

I whakaputaina i te tau 2001 e Te National Smokefree Group, kei raro i te whakahaere o The Asthma and Respiratory Foundation of New Zealand (Inc.), the Cancer Society of New Zealand (Wellington Division), the Health Sponsorship Council, the Heart Foundation, me Te Hotu Manawa Māori.

I whakamahia ngā etita, ngā hoahoa me te huanga e Te Pou Taki Kōrero Whāiti, Pouaka 3293, Te Whanganui ā Tara, Aotearoa.
www.learningmedia.co.nz

Nā Heni Jacob i whakamāori.

Mana pupuri © National Smokefree Group 2001
Pūmau te mana. Ngā tono ki te kaiwhakaputa i te pukapuka, c/- Health Sponsorship Council, Pouaka Poutāpeta 2142, Te Whanganui ā Tara, Aotearoa.

ISBN 0 478 12942 4

He Mīharo Rua

nā Rihia Kenny

nā Ali Teo ngā pikitia



Ka puta a Māmā ki te noho i te tūru i te parani,
mōhio tonu te whānau kua puta ia ki te kaipaipa.

I ētahi wā, ka mātaki atu a Kara i tōna Māmā e
momimomi ana. Ka mātaki ia i te auahi e puta ana i
tōna waha. Ka piki te auahi me te riporipo haere ki
runga, ngaro atu ana ki te hau.





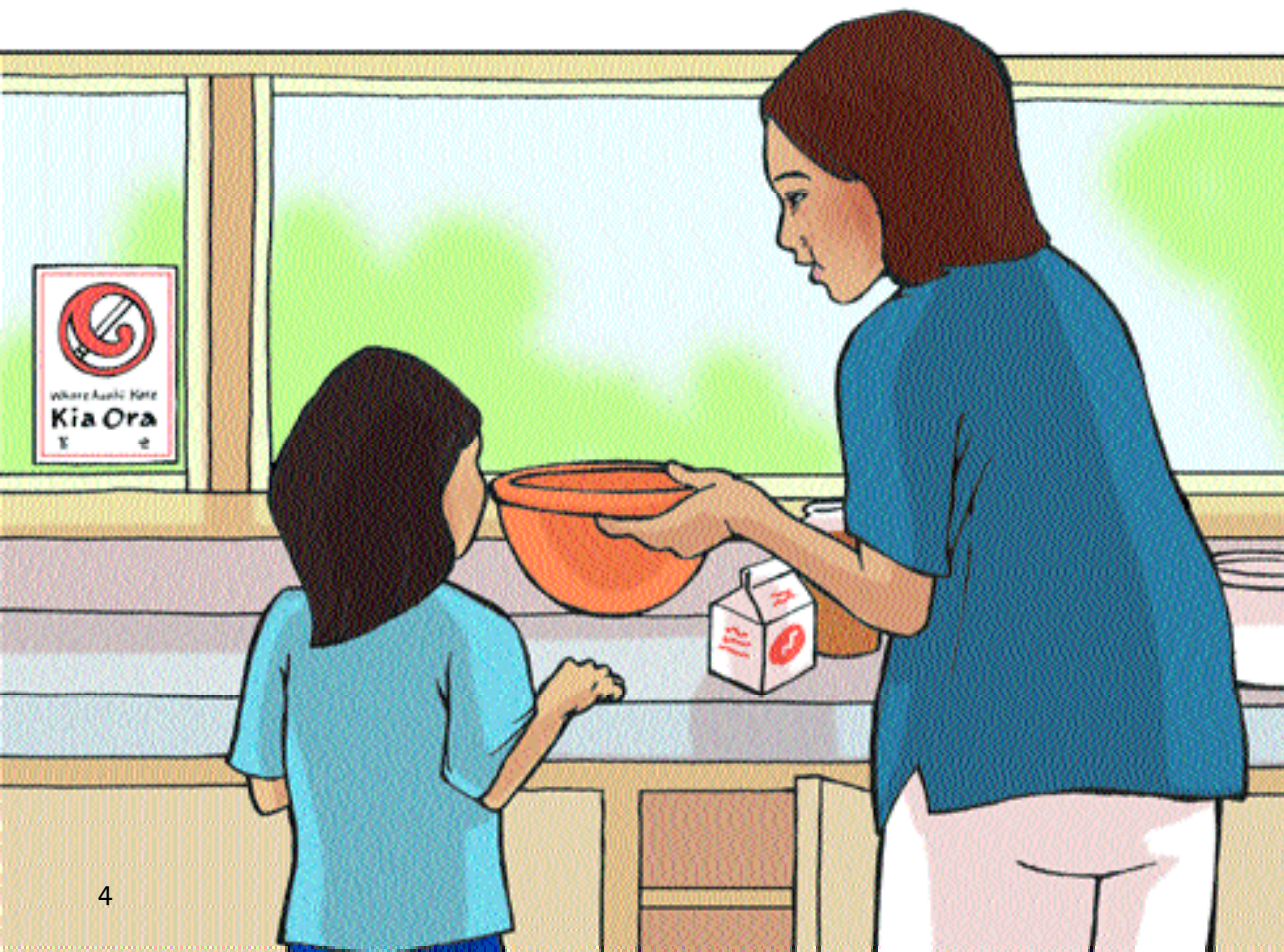
I te Rātapu tuatahi o ia marama, ka hui tahi te whānau ki te kāinga o Nanny, ki reira kai tahi ai mō te tina. Tino pai ki a Kara me tana tungāne, a Arana, tae atu ki ērā atu o ō rāua whanaunga, te haere ki te kāinga o Nanny. Puta noa i Aotearoa, ko Nanny te tino kuia mō te tunu kai.

Ka maumahara a Kara hei āpōpō rātou haere ai ki te kāinga o Nanny.

I te mahi pūrini a Māmā hei hari atu ki te kāinga o Nanny. Tino pai ki te katoa ngā pūrini a Māmā, ā, inā hoatu te waimiraka reka me te kirīmi kohuka ki runga ake, i te mea he hākari tēnei.

Ka mea atu a Kara ki tōna Māmā, “Māku koe e āwhina.”

“Ka pai, Kara. Māu au e āwhina ki te koheri i te kirīmi,” te whakautu a Māmā, me te whiowhio haere anō.





“Te āhua nei e tino koa ana tō ngākau, nē Māmā?”

“Āe kōtiro, ka nui taku koa.”

“He aha ai?”, te pātai a Kara.

“Hei āpōpō ka whāki au, i te kāinga o Nanny.”

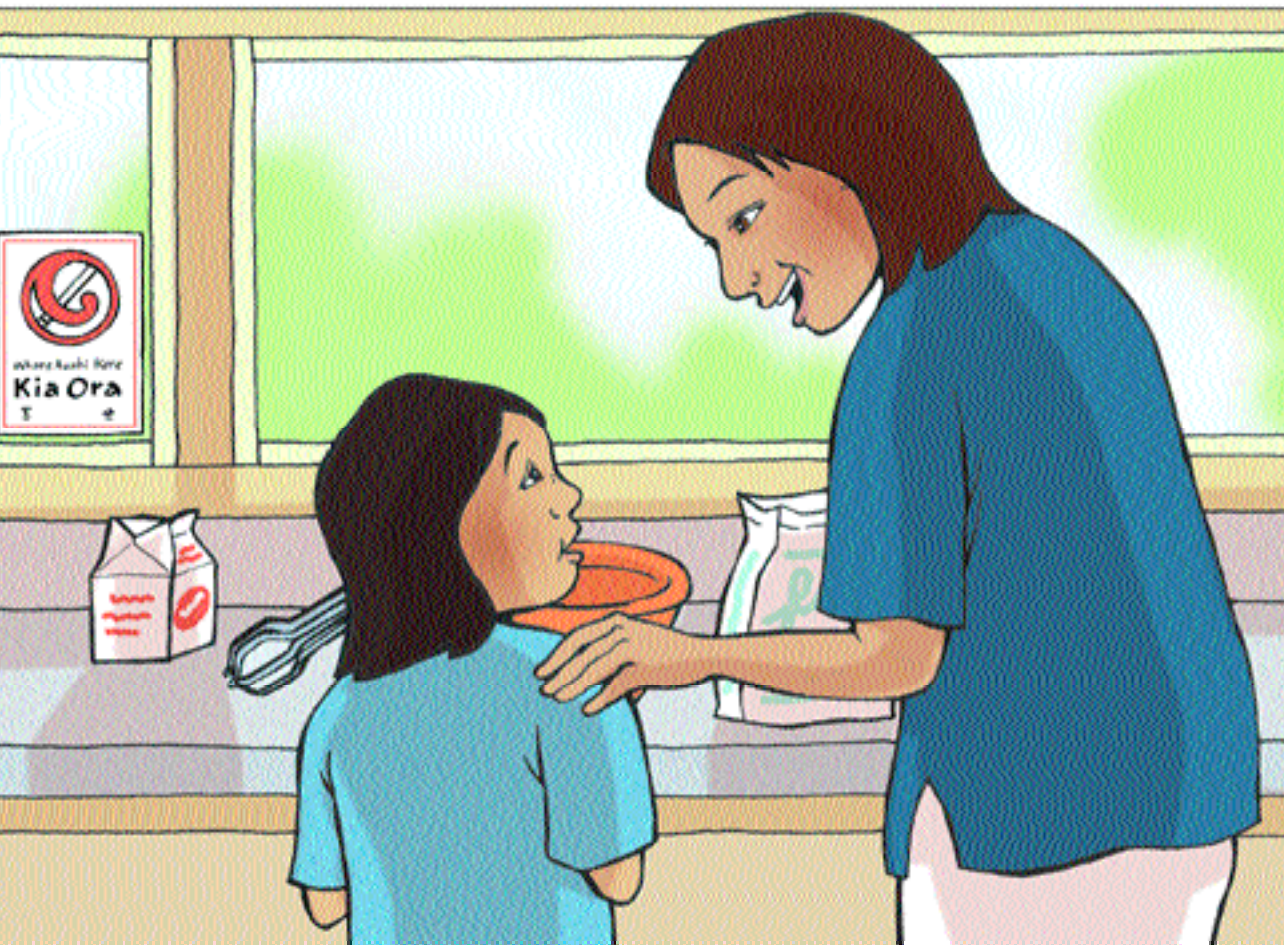
“Kāore e pai tō whakaatu mai ki a au ināia tonu nei?”

“He kaupapa mīharo tāku,” te whakautu a Māmā, me te ūkui atu i te kirīmi kei te ihu o Kara.

“Ki te kōrero mai ki au i nāianei, e kore au e whāki ki tētahi atu,” te īnoi a Kara. “Tēnā koa Māmā ... ”

“Kāti. Kia noho tapu tēnei kōrero ki a tāua nē? Koinā tō oati?”

“Āe, ko taku oati tēnā,” te whakautu a Kara.



Ka whakaaro a Kara he pakeke ia, i te mea ka whakaāe tōna māmā ki te whāki atu ki a ia.

Ka mea a Māmā, “Kua hapū au.”

“Kua aha?”

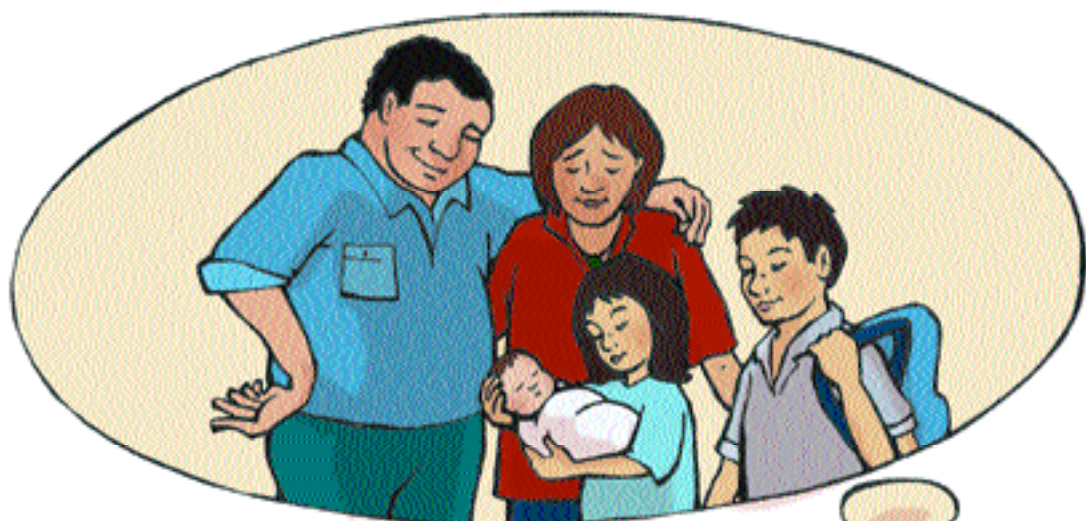
“Kua hapū. Kāore e roa ka whānau mai taku pēpi.”

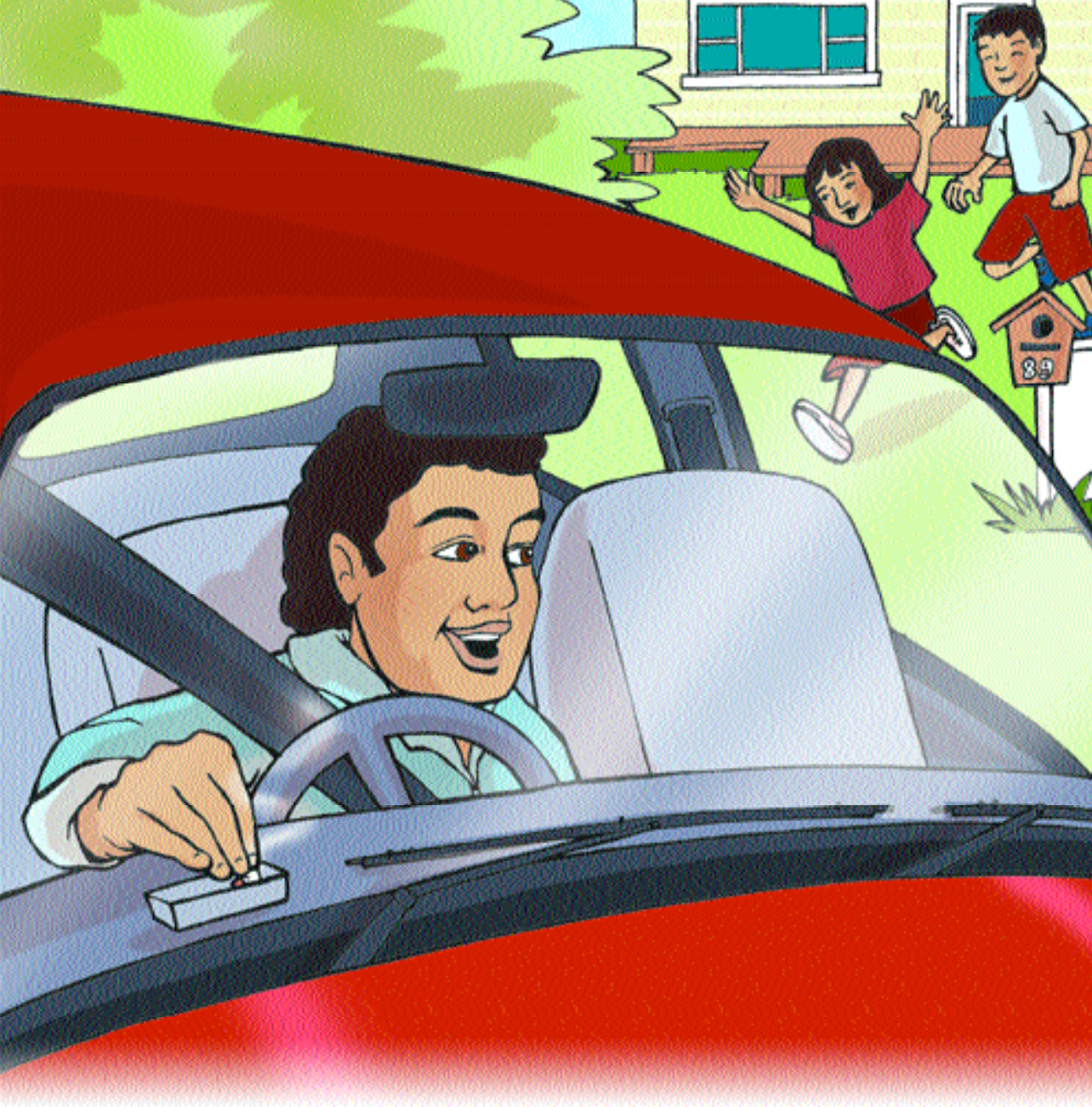
“Hika, he pēpi ... ka whānau mai he pēpi ... ka whai teina ... tungāne rānei au. Ka noho tuakana au.”
Ka tino koa a Kara. Ka kata a Māmā i te awhiawhi, i te kihikihi a Kara.

Ka mea atu a Kara i ōna ringaringa ki te puku o tōna Māmā, me te karanga atu, “Kia ora. Ko tō tuakana, ko Kara tēnei e mihi atu nei.”



I tana moenga, ka whakaaro a Kara ki ngā mea
ka taea e rāua ko te pēpi. Nāwai rā, ka rutua ia e te
moe, ā, ka hari tōna ngākau.





I te taenga atu o Kara rātou ko Arana, ko Māmā, ko Pāpā ki te kāinga o Nanny, ka tae hoki a Matua Peni i runga i tōna waka hou. Ka oma atu a Kara rāua ko Arana ki te mihi ki a ia. Tino pai ki ngā tamariki a Matua Peni. Ka kite ia i a rātou e oma mai ana, ka whakaweto i tāna hikareti – kāore hoki ia i pai ki te kaipaipa i mua i ngā tamariki.

Kua tae kē mai a Whaea Lena rāua
ko Matua Piri, me ā rāua tamariki
tokorima. Ka haere tonu mai a Aunty
Henri me āna tamariki mā runga pahi.





He tino koa a Arana rāua ko Kara ki te kite i ō rāua whanaunga. Ka noho a Kara ki te tārere, ka titiro ki ōna whanaunga e tākaro ana. I hiahia ia ki te kōrero atu mō te pēpi hou, engari ka nohopuku ia. Me ū ki tana oati.

Kātahi ka puta te karanga a Nanny,
“Kua reri te kai.”

Ka huihui mai ngā tamariki i te rūma
kaukau ki te horoi i ō rātou
ringaringa.





Ka noho te whānau ki te tēpu nui, ā, ka riro mā Matua Piri e whakapai ngā kai.

E kai ana rātou, ka whakaaro a Kara āhea a Māmā e whāki ai kei te hapū ia.

Kua mea a Arana, “Kua reri au mō te pūrini.”

“Nā, i mua i te pūrini, he pānui tā māua,” te kī a Pāpā, me te tū ki runga. “Kua hapū a Moana. Taihoa ka whai pēpi hou māua.”

Umere ana te katoa, me te pakipaki o ngā ringaringa. Ka nui te koa o te whānau.

Kua kōrero a Nanny, “Ka pai. Ko te rongō tino pai rawa atu ki a au mō tētahi wā roa nei.”

Ka kata te whānau.



Ka mutu te tina, ka waiho mā ngā tamariki pakeke e horoi ngā rīhi. Ka puta a Māmā ki waho, ka haere ki te noho ki raro i te pōhutukawa tino rahi.

Ka titiro atu a Kara i te matapihi, ka kite i a Māmā e kuhu ana i te hikareti ki tōna waha. Engari kāore i whakakāngia. Te āhua nei ka whakaaro ia. I te whakaaro hoki ko Kara he aha ngā kino o te auahi ka pā ki te pēpi e noho mai rā i te puku o Māmā.

Kātahi ka tū ake a Māmā, ka haere tika atu ki te kāuta. Ka tangohia te pākete hikareti, porowhiua atu ki te pae rāpihi. Ka mea ia, “Kua mutu i konei tāku kaipaipa.”



Kua whai kupu ko Matua Peni, “Ka pai, e te tuahine. Māku koe e āwhina. Kua roa au e hiahia ana kia mutu tāku kaipaipa. Kia mutu ko tāua tahi.”



Ka awhi a Kara rāua ko Arana i a Māmā.

Ka kī atu a Arana, “Kei konei anō māua hei āwhina i a koe, Māmā.”

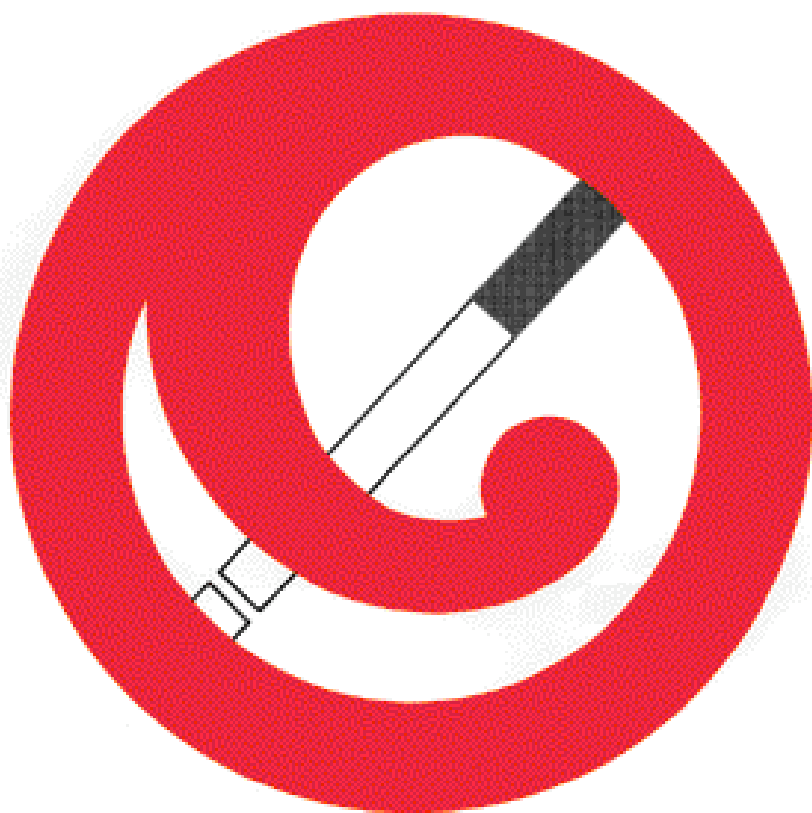
“Me au hoki,” te kī ake a Pāpā.

“Me au anō,” te karanga a ngā whanaunga, ngā whaea tae atu ki a Matua Piri.

Kua umere anō, kua pakipaki anō te whānau. Ka nui tō rātou koa.

Ka whai kupu anō a Nanny, “Ka pai. Koia tēnā ko te tino rongopai tuarua kua pā mai ki a au mō tētahi wā roa nei.”

Me te aha, kua kata anō te whānau.



Whare Auahi Kore **Kia Ora**



TV PŪKAI MĀNUKA MĀORI
The Heart of the Mānuka Heart

TVBVM 001



A MĀORI DEVELOPED PROJECT